

Pittsburgh. But Sawyer is terrified that the stalker who forced her to leave Boston has followed her.

DS ★★★★★☆

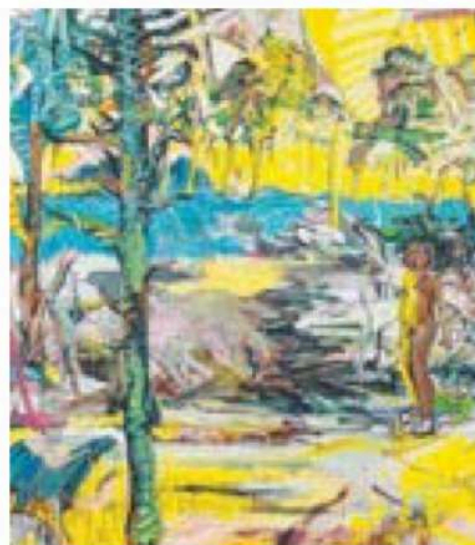
University, 49 Scenic Boulevard, Clayton. Spinoff: tomorrow, 7pm; *The Edge of Reality*, Sunday, 7.30pm. Tickets: \$69. Bookings: (03) 9905 1111 or online.

NSW

EXHIBITION

Tonight Think of Me

French-Australian artist Marie Peter-Toltz paints surreal imagery in high-key colour to fill in the gaps where our subconscious may lack detail. In her exhibition *Tonight Think of Me*, Peter-Toltz depicts voyeuristic females in dreamscape-esque worlds. The works are laced with innuendo, lust and love, and pay homage to stories and fables that have traditionally formed part of our human disposition. Pictured, *Constellations Exotiques* (2018).



Nanda\Hobbs. 12-14 Meagher Street, Chippendale, Sydney. Mon-Fri, 9am-5pm; Sat, 11am-4pm. Inquiries: (02) 8599 8000 or online. Until May 12.

TALK

Aperture Australia

Journalist and photographer Ray Martin hosts a panel discussion this weekend with eight Australian photographers, including fine art photographer Alessia Sindona and documentar-

TASMANIA

CLASSICAL

Beethoven's Fifth

Rory Macdonald conducts the Tasmanian Symphony Orchestra through Beethoven's Symphony No 5; a new composition by Australia composer Carl Vine, Concerto for Two Pianos; and Humperdinck's *The Merchant of Venice* (Love Scene). With pianists Piers Lane and Kathryn Stott.

Federation Concert Hall. 1 Davey Street, Hobart. May 19, 7.30pm. Tickets: \$51-\$109. Bookings: 1800 001 190 or online.

SOUTH AUSTRALIA

EXHIBITION

You are a Habitat

From the trees in our back yard and cultivated farmland to the family dog, humans have the power to manipulate and control climate and the global environment. Group exhibition *You are a Habitat* explores this notion through its examination of our symbiotic relationships with living organisms.

Adelaide Central Gallery. 7 Mulberry Road, Glenside. Mon-Tues and Thurs-Fri, 9am-5pm; Wed, 9am-6.45pm; or by appointment. Admission: free. Inquiries: (08) 8299 7300 or online. May 1-26.

WESTERN AUSTRALIA

EXHIBITION