

OUT & ABOUT

NSW & ACT

New releases

Departures (M)

An exquisite film from Japan, directed with supreme tact and delicacy by Yojiro Takita, about an out-of-work cellist (Masahiro Motoki) who discovers a new career preparing bodies for cremation. The morbid possibilities of the story are subsumed in a moving contemplation of grief, family love and traditional ceremonies of mourning. A life-affirming film of transcendent beauty and daring.
Evan Williams

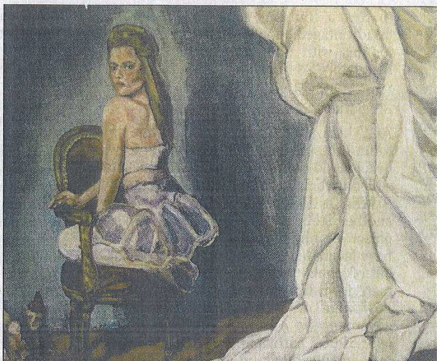
Whatever Works (M)

The latest Woody Allen-directed film stars *Seinfeld* co-creator Larry David as an elderly misanthrope who becomes involved in a surprising relationship with a naive, beautiful refugee from the American deep south, beautifully played by Evan Rachel Wood. This is intermittently amusing, but far from Allen's best.

David Stratton

Call + Response (M)

Produced and directed by Justin Dillon, this rough-hewn, passionate documentary is a record of a rock concert staged as a protest against slavery,



Alluring: Detail from Marie Peter-Toltz's *La Boda de Sangre*

Variations on female form

MARIE Peter-Toltz, a figurative painter based in Sydney, rarely stays still for long. Peter-Toltz, the wife of Australian Booker-shortlisted author Steve Toltz, was born in France and studied art in Europe and the US before moving to Australia in 2004. During the past year, she travelled to Paris twice to work in artist residencies, and she will be on the move again next year after receiving an artist grant from the Vermont Studio Centre in the US. Her latest exhibition — *Enigma Variations*, at Art at Home Gallery in Balmain, Sydney — is the result of the time spent in a range of different studio spaces across Paris exploring ideas of the female body and sexuality, an evolution from her previous work on motherhood and children. "Increasingly I became my own subject," she says. The exhibition, which opened last night, runs until November 8.

Ashleigh Wilson